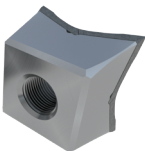
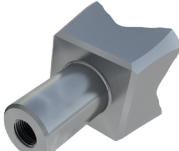


Quadco is the Pioneer & Leader in the Industry for over 30 years. Many copy but none can match the Quality & Performance of Quadco Cutting Tools.

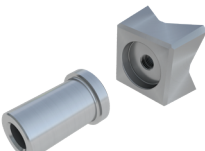
NO-SHANK



ONE-PIECE



TWO-PIECE



SAW DISCS

Best Quality, Performance and Reliability in the Industry!
Fully Machined from premium tool steel and available to fit most popular brands and models. Many options available.

ONE-PIECE DISCS

DEEP GULLET DISC

- Deep Gullet design (*patented*) provides larger chip pockets reducing plugging and increasing cutting efficiency
- Deep pocket design allows chips to flow away from the tooth with less resistance, reducing component wear, and lowering operating costs

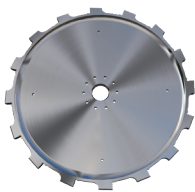
- Optimum tooth mounting angle reduces tooth loading, increasing disc strength and life
- Flange Plate built into the disc
- Two-Year/4,000-Hour Warranty Pro-Rated



NEW!

STANDARD ONE-PIECE DISC

- Optimum tooth mounting angle reduces load per tooth while promoting maximum disc and tooth life
- Two-Year/4,000-Hour Warranty Pro-Rated



SEGMENTED DISCS

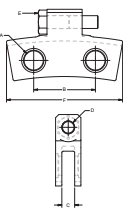
TWO-LEG FULL COVER | REVERSIBLE HOLDER

Symmetrical holder design allows for numerous capabilities, including the ability to easily repair impact or wear damage by rotating the holder 180°



Use Sleeves For Corresponding Holder Dim A

SIZE	SLEEVES
1 1/2"	Q10014 & Q10015
1 1/4"	QH10197 & QH10198
1"	QH10015 & QH10016

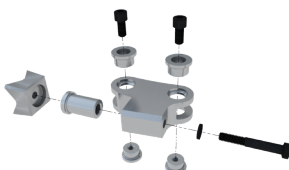


Tooth Holder Guide

HOLDER	DIM A	DIM B	DIM C	DIM D	DIM E	DIM F
Q10165	1"	3 1/2"	7/8"	3/4"	3/4"	7.47"
QH10248	1 1/4"	3 1/2"	7/8"	3/4"	3/4"	7.087"
QH10234	1 1/4"	3 1/2"	7/8"	3/4"	3/4"	7.517"
Q10176	1 1/2"	4.827"	1"	1"	1"	10.22"
Q10330	1 1/2"	4.827"	1"	1"	1"	9.728"
Q10899	1 1/2"	4.827"	1"	1"	1"	9.142"

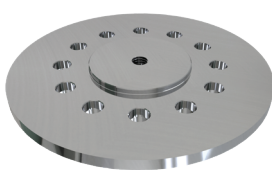
DISC COMPONENT OPTIONS

DISC HOLDER ASSEMBLY



Shown with 2-Piece Tooth

FLANGE PLATES



Unique "disc clamping" design

REVERSIBLE TOOTH HOLDER



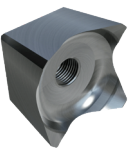
- Fully symmetrical so the tooth can be mounted on either side, allowing the holder to be reversed
- Available to fit shank and no-shank tooth types
- Doubles the life of the holder
- Lowers operating costs

QUADCO MAKES A FULL LINE OF SAW DISC ASSEMBLIES INCLUDING HEAVY DUTY, REVERSIBLE, STANDARD, AND WIDE & NARROW KERF TO FIT ANY SAW HEAD. CALL WITH YOUR SAW DISC SPECIFICATIONS TO MATCH ONE-PIECE OR SEGMENTED DISC COMPONENTS!

ADVANTAGE SERIES SAW TEETH

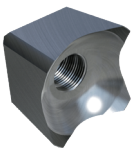
New Tooth Technology to Reduce Your Operating Cost | Greater Impact Durability in Low Abrasion Conditions

QRX103R2



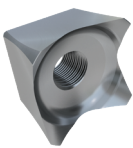
Interchange with QH10103T

QRX233R2



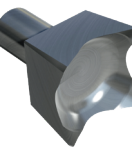
Interchange with Q10233T

QRX333R2



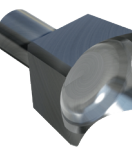
Interchange with Q11333T

QRX150R2



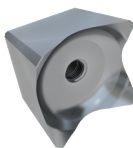
Interchange with QH10150T

QRX24R2



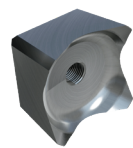
Interchange with QK10024T

QRX96R2



Interchange with QH10096T

QRX31R2



Interchange with QK10031T

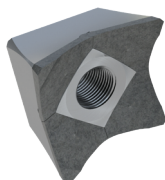
PART NO.	DESCRIPTION	KERF	SHANK LENGTH	SHANK DIAMETER	BOLT SIZE
NO-SHANK					
QRX103R2	QRX Tooth No-Shank	2"	N/A	N/A	3/4" NF
QRX233R2	QRX Tooth No-Shank	2 5/16"	N/A	N/A	1" NF
QRX333R2	Beaver Tooth No-Shank	2 7/16"	N/A	N/A	1" NF
ONE-PIECE					
QRX150R2	QRX ToothLong Shank	2"	1 1/2"	1"	1/2" NF
QRX24R2	QRX ToothLong Shank	2 3/8"	2"	1.234"	5/8" NF
TWO-PIECE <small>Note: Crown Teeth require 1 1/2" longer bolt</small>					
QRX96R2	QRX Tooth Crown	2"	3/4" 1 1/2"	1"	1/2" NF
Shank Option(s)		QH10067T 3/4" Short QH10068T 1 1/2" Long			
QRX31R2	QRX Tooth Crown	2 3/8"	2"	1.234"	5/8" NF
Shank Option(s)		QK10023T 2" Long			

QUADCO CUTTING TOOLS

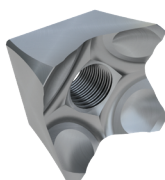


Introducing New QP Series Teeth Saw Teeth

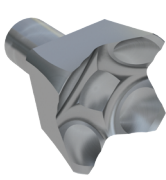
QPX4NB



QP33



QP24K



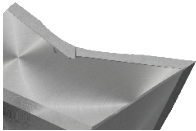
**Your Ultimate Source for
Forestry Cutting Tools & Attachments**

Quad Tooth® System | Demand Genuine Quadco

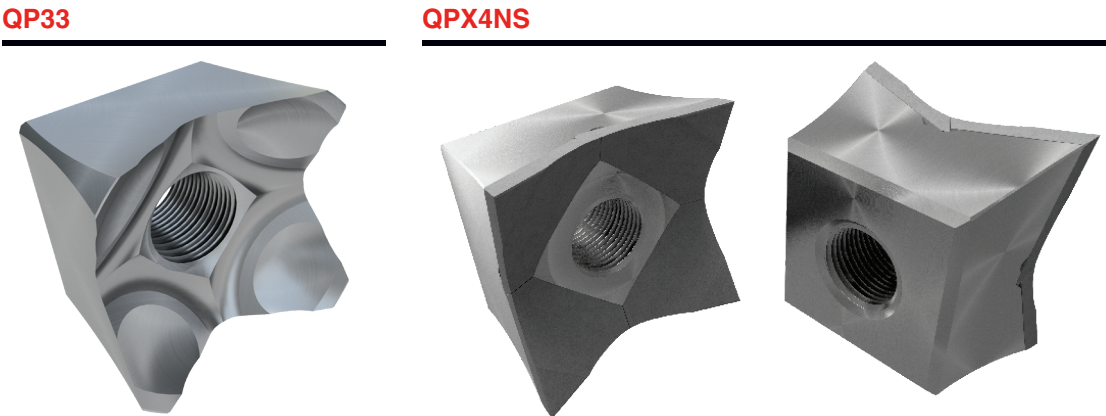
SAW TOOTH CUTTING TOOL GUIDE

INDUSTRY LEADING CUTTING PERFORMANCE & LIFE

- **New** Durable Carbide Grade to match cutting application
- **More Carbide & Steel** where it counts
- **Longer** wear life hours
- **Lower** operating costs
- **Larger Kerf = More Clearance** to Butt Plate and Saw Disc
- **Quadco Patented “Flare” Design** reduces tooth drag
- **Improved Quadco Patented Carbide Tip** overlap eliminates blowby wear



NEW QPS SERIES SAW TEETH



PERFORMANCE SERIES	PART NO.	DESCRIPTION	KERF (NOMINAL SIZE)	SHANK LENGTH	SHANK DIAMETER	BOLT SIZE
	NO-SHANK					
	QP03H	Performance Tooth No-Shank	2 1/16"	N/A	N/A	3/4" NF
	QP23	Performance Tooth No-Shank	2 3/8"	N/A	N/A	1" NF
	QP33	Performance Tooth No-Shank	2 1/2"	N/A	N/A	1" NF
	QPX4HNB	Performance Tooth Carbide Beaver	2"	N/A	N/A	3/4" NF
	QPX4HNS	Performance Tooth Carbide Sharp	2"	N/A	N/A	3/4" NF
	QPX4NBD	Performance Tooth Carbide Beaver Durable	2 3/8"	N/A	N/A	1" NF
	QPX4NB	Performance Carbide Beaver	2 3/8"	N/A	N/A	1" NF
	QPX4NS	Performance Carbide Sharp	2 3/8"	N/A	N/A	1" NF
	QPX4KNB	Performance Tooth Carbide Beaver	2 1/2"	N/A	N/A	1" NF
	QPX4KNS	Performance Tooth Carbide Sharp	2 1/2"	N/A	N/A	1" NF
	QPX4KNBD	Performance Tooth Carbide Beaver Durable	2 1/2"	N/A	N/A	1" NF
	ONE-PIECE					
	QP97	Performance Tooth Short Shank	1 3/4"	0.100"	1"	1/2" NF
	QP50H	Performance Tooth Long Shank	2 1/16"	1 1/2"	1"	1/2" NF
	QPX4HB	Performance Tooth Carbide Beaver	2"	1 1/2"	1"	1/2" NF
	QPX4HBD	Performance Tooth Carbide Durable	2"	1 1/2"	1"	1/2" NF
	QPX4HS	Performance Tooth Carbide Sharp	2"	1 1/2"	1"	1/2" NF
	QP24K	Performance Tooth Long Shank	2 1/2"	2"	1.234"	5/8" NF
	QPX4KB	Performance Tooth Carbide Long Shank	2 1/2"	2"	1.234"	5/8" NF
	QPX4KBD	Performance Tooth Carbide Beaver Durable	2 1/2"	2"	1.234"	5/8" NF
	QPX4KS	Beaver Tooth Carbide Long Shank Sharp	2 1/2"	2"	1.234"	5/8" NF
	TWO-PIECE					
	QP96HC	Performance Tooth Crown	2 1/16"	3/4" 1 1/2"	1	1/2" NF
	Shank Option(s)	QH10067T 3/4" Short QH10068T 1 1/2" Long				
	QP31KC	Performance Tooth Crown	2 1/2"	2"	1.234"	5/8" NF
	Shank Option(s)	QK10023T 2" Long				
	QPX4KCB	Performance Tooth Carbide Beaver Crown	2 1/2"	2"	1.234"	5/8" NF
	Shank Option(s)	QK10023T 2" Long				

LEGACY SERIES	Q10233T	QK10024T	QVK4X4B-G1

PART NO.	DESCRIPTION	KERF	SHANK LENGTH	SHANK DIAMETER	BOLT SIZE
NO-SHANK CONCAVE					
QH10110T	Concave Tooth No-Shank	2"	N/A	N/A	3/4" NF
Q10205T	Concave Tooth No-Shank	2 1/4"	N/A	N/A	1" NF
NO-SHANK BEAVER					
QH10103T	Beaver Tooth No-Shank	2"	N/A	N/A	3/4" NF
Q10233T	Beaver Tooth No-Shank	2 5/16"	N/A	N/A	1" NF
Q11333T	Beaver Tooth No-Shank	2 7/16"	N/A	N/A	1" NF
NO-SHANK CARBIDE					
QVH4X4NSB-G1	Beaver Tip Tooth No-Shank	1 7/8"	N/A	N/A	3/4" NF
QV4X4NS-G1	Sharp Tip Tooth No-Shank	2 1/4"	N/A	N/A	1" NF
QV4X4NSB-G1	Beaver Tip Tooth No-Shank	2 1/4"	N/A	N/A	1" NF
QV4X4NR-11C	Durable Tip Tooth No-Shank	2 1/4"	N/A	N/A	1" NF
QV4X4NSBK-G1	Beaver Tip Tooth No-Shank Wide Kerf	2 3/8"	N/A	N/A	1" NF
ONE-PIECE CONCAVE					
QK10012T	Concave Tooth Short Shank	1 1/8"	0.38"	0.62"	3/8"
QMX10015T	Concave Tooth Short Shank	1 1/8"	0.38"	0.62"	3/8" NC
Q10121T	Concave Tooth Short Shank	1 3/8"	0.1"	1"	3/8" NC
QH10062T	Concave Tooth Short Shank	2"	1 1/2"	1"	1/2" NF
QH100091T	Concave Tooth Short Shank	1 7/8"	1 3/4"	1"	1/2" NF
Q10001T	Concave Tooth Short Shank	2 1/4"	0.938"	1 1/4"	1/2" NF
Q10097T	Concave Tooth Short Shank	2 1/4"	2"	1 1/4"	1/2" NF
Q10098T	Concave Tooth Short Shank	2 1/4"	2"	1 1/4"	5/8" NF
M1K404T	Concave Tooth Short Shank	2 5/16"	2"	1.234"	5/8" NF
ONE-PIECE BEAVER					
QK10061T	Beaver Tooth Short Shank	1 1/8"	0.38"	0.621"	3/8"
QMX10020T	Beaver Tooth Short Shank	1 1/8"	0.35"	0.621"	3/8" NC
QH10150T	Beaver Tooth Short Shank	2"	1 1/2"	1"	1/2" NF
QH10078T	Beaver Tooth Short Shank	2"	3/4"	1"	1/2" NF
QH10098T	Beaver Tooth Short Shank	2 1/8"	1 1/2"	1"	1/2" NF
Q10214T	Beaver Tooth Short Shank	1 5/8"	0.1"	1"	5/8" NF
Q10797T	Beaver Tooth Short Shank	1 3/4"	0.1"	1"	1/2" NF
Q10797EXT	Beaver Tooth Short Shank	1 7/8"	0.1"	1"	1/2" NF
Q10635T	Beaver Tooth Short Shank	1 3/4"	0.1"	1"	3/8" NC
Q10206T	Beaver Tooth Short Shank	1 5/8"	0.1"	1"	3/8" NC
Q10150T	Beaver Tooth Short Shank	2 1/4"	0.938"	1 1/4"	1/2" NF
Q10122T	Beaver Tooth Long Shank	2 1/4"	2"	1 1/4"	1/2" NF
QK10024T	Beaver Tooth Long Shank	2 3/8"	2"	1.234"	5/8" NF
ONE-PIECE CARBIDE					
QVH4X4-1B-G1	Beaver Tip Tooth	1 7/8"	1 1/2"	1"	1/2" NF
QV4X4B-G1	Beaver Tip Tooth	2 1/4"	0.938"	1 1/4"	1/2" NF
QVK4X4B-G1	Beaver Tip Tooth; Wide Kerf	2 3/8"	2"	1.234"	5/8" NF
QVK4X4B-11C	Beaver Tip Tooth Durable Carbide; Wide Kerf	2 3/8"	2"	1.234"	5/8" NF
QVH4X4-1B-11C	Beaver Tip Tooth Durable Carbide	2 7/8"	1 1/2"	1"	1/2" NF
TWO-PIECE CONCAVE <small>Note: Crown Teeth require 1 1/2" longer bolt</small>					
QH10120T	Concave Tooth Crown	2"	3/4" 1 1/2"	1"	1/2" NF
Shank Option(s)	QH10067T 3/4" Short QH10068T 1 1/2" Long				
Q10105T	Concave Tooth Crown	2 1/4"	0.938" 2"	1 1/4"	1/2" NF
Shank Option(s)	Q10106T 0.938" Short; Q10117T 2" Long				
QK10022T	Concave Tooth Crown	2 3/8"	2"	1.234"	5/8" NF
Shank Option(s)	QK10023T 2" Long				
M1M203T	Concave Tooth Crown	2"	2 1/2"	N/A	5/8" NC
Holder Option(s)	M1HBF200 2 1/2" Long				
M1M205T	Concave Tooth Crown	2 5/16"	N/A	3/4"	3/4" NC
Holder Option(s)	M1HBF2516 3 1/4" Long				
TWO-PIECE BEAVER <small>Note: Crown Teeth require 1 1/2" longer bolt</small>					
QH10096T	Beaver Tooth Crown	2"	3/4" 1 1/2"	1"	1/2" NF
Shank Option(s)	QH10067T 3/4" Short QH10068T 1 1/2" Long				
Q10094T	Beaver Tooth Crown Cross-Back	2 1/4"	0.938"	1 1/4"	1/2" NF
Shank Option(s)	Q10093T 0.938" Short				
Q10136T	Beaver Tooth Crown	2 1/4"	0.938" 2"	1 1/4"	1/2" NF
Shank Option(s)	Q10096T 0.938" Short Q10117T 2" Long				
QK10031	Beaver Tooth Crown	2 3/8"	2"	1.234"	5/8" NC
Shank Option(s)	QK10023T 2" Long				
M1M233T	Beaver Tooth Crown	2"	2 1/2"	1 1/4"	5/8" NF
Holder Option(s)	M1HBF200 2 1/2" Long				
TWO-PIECE CARBIDE <small>Note: Crown Teeth require 1 1/2" longer bolt</small>					
QVK4X4CB-G1	Beaver Tip Tooth Crown; Wide Kerf	2 3/8"	2"	1.234"	5/8" NF
Shank Option(s)	QK10023T 2" Long				